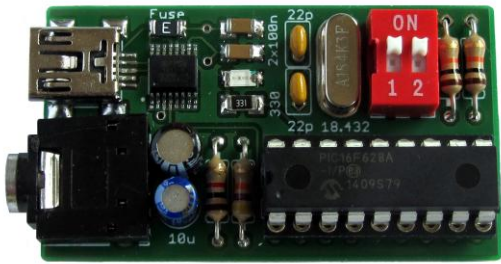


FSK to USB Interface



Firmware version: 3.1

Power Supply: USB

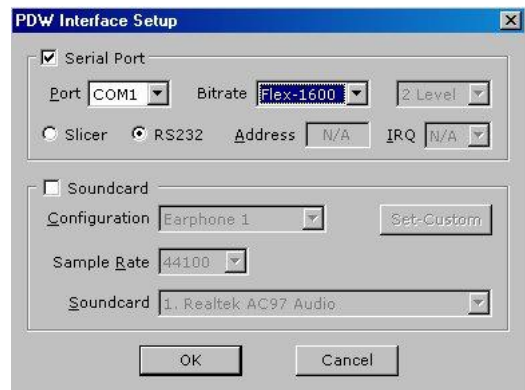
The interface gets its power from the USB port. No separate power supply is needed.

USB Virtual Serial Port and PDW

Please install the [FTDI serial port driver](#) before connecting the interface to a USB port. Version 2.12.10 is the latest driver for all Windows versions.

If you use PDW 3.1, the assigned serial port number should be in the range from 1 to 9. PDW 3.12 also supports higher port numbers. If needed, you can change the assigned port number by connecting the interface and using the FTDI [COMPort Assignment Utility](#)

In PDW, select the RS232 interface and set the serial port number to the assigned value. Choose Flex-1600, POCSAG or Mobitex depending on the system you wish to monitor and set the DIP-switches on the interface accordingly.



DIP-switches

The interface supports 4 pre-programmed data rates: 512, 1200/2400 (POCSAG), 1600 (FLEX) and 8000 bit/s (Mobitex). The speed is selected with the DIP switches:



512
off - off



1600
on - off



1200/2400
off - on



8000 bit/s
on - on

After selecting a different speed, the interface needs to be restarted: simply disconnect and reconnect the USB cable.

LED

After connecting the USB cable, the LED flashes: one time long, followed by 1, 2, 3 or 4 flashes depending on the DIP switch settings.

After that, the LED lights continuously with short interruptions about once per second. This indicates that the signal processing and serial communication routines are functioning correctly.